

DELTA®

HIGH PERFORMANCE AIR & MOISTURE BARRIERS

DÖRKEN

DELTA®-DRY & LATH

Ventilated Rainscreen with Pre-Installed Glass Lath
for Absorptive Claddings.



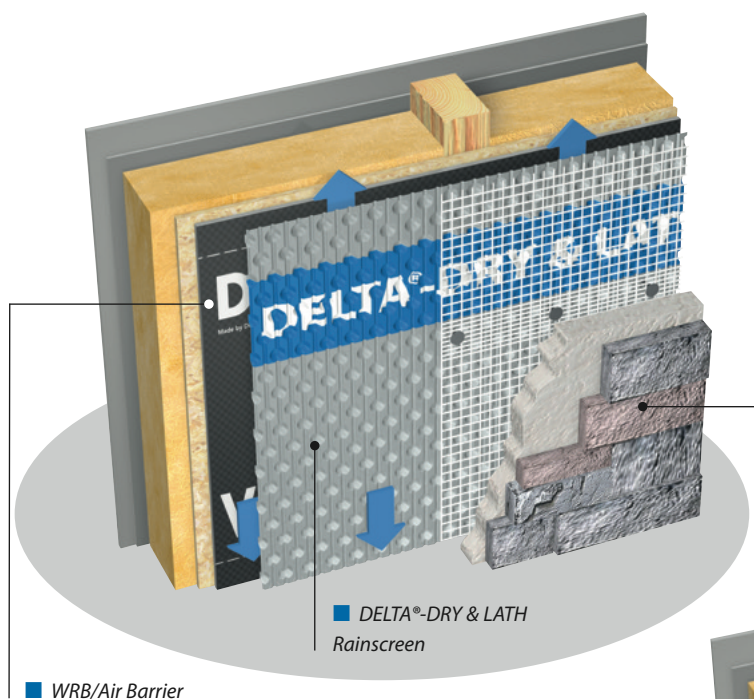
Controls moisture in wall assemblies
with 2-in-1 rainscreen & lath solution



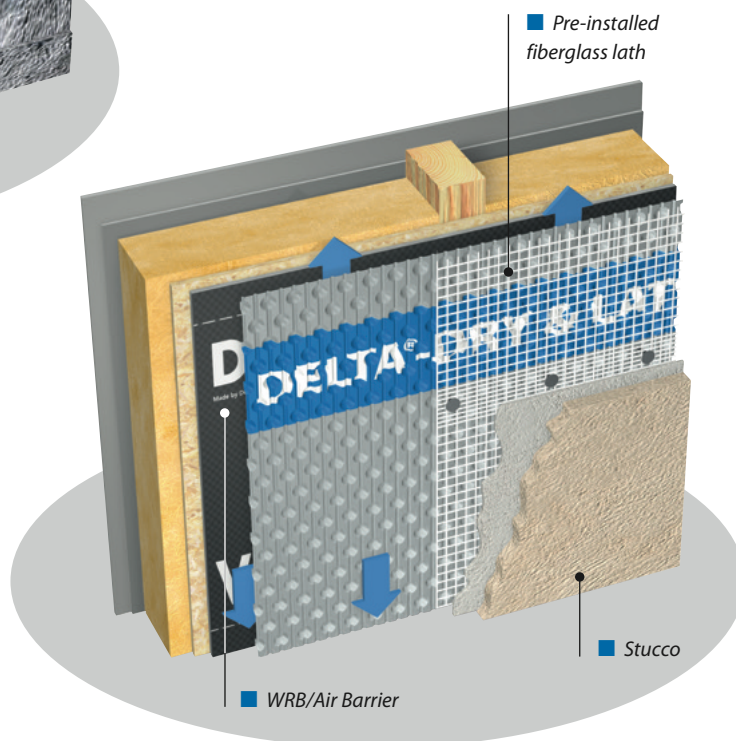
Innovative 2-in-1 solution for adhered stone & conventional stucco claddings.

DELTA®-DRY & LATH

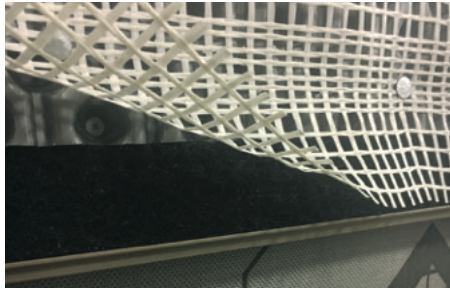
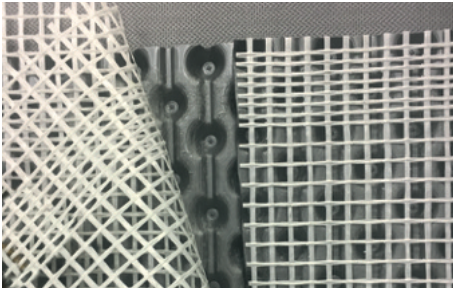
High Performance Rainscreen with Pre-Installed Fiberglass Lath System.



DELTA®-DRY & LATH eliminates 1 whole step from installation, combining the proven technology of DELTA®-DRY rainscreen with an innovative fiberglass lath for a complete, 1-step moisture control system that saves time and money.



AC308 Approved
AC208 Approved
UES-323



Innovative High Performance Rainscreen System.

DELTA®-DRY & LATH offers builders and stone and stucco contractors an innovative way to maintain building integrity – dramatically reducing the risk of wall rot and decay, while reducing installation time and costs.

- Meets ASTM E2925-17 (*Standard Specification for Manufactured Polymeric Drainage and Ventilation Materials Used to Provide a Rainscreen Function*)
- Lightweight, making it easy to cut and install
- Fewer fasteners required
- Fiberglass lath is safer to handle and install than metal lath
- Pre-installed glass lath is alkali-resistant (won't be affected by cementitious coatings)
- Fiberglass lath complies with ICC-ES AC275 and AC356 (meets MVMA requirements)
- Fiberglass is resistant to chemicals and corrosion
- Rainscreen with Air-gap Technology dries and drains, and cannot be penetrated by moisture (liquid or vapor)
- Blocks solar-driven moisture from moving through the wall from the outside

- Allows incidental moisture (e. g. window leak) to dry to the outside
- Ventilation allows for quicker drying, dramatically reducing the risk of mold, wall rot, and decay

Technical Data Overview:

Test	Method	Units	Results
Ventilation/Airflow	ASTM E2925-14	L/s	1.18 @ 10 Pa* 1.41 @ 10 Pa**
Drainage	ASTM D5199-12	%	1.94* 0.65**
Thickness	ASTM D5199-12	mm	10.76
Compression Strength	ASTM D6364-06	kPa	123.2
UV Exposure	ASTM D6364-06	kPa	116.5
Heat Aging	ASTM D6364-06	kPa	136.5
Mold/Fungal Growth	ASTM C1338-14	Visual	No Mold

* Test Results performed with insect screen.

** Test Results performed without insect screen.

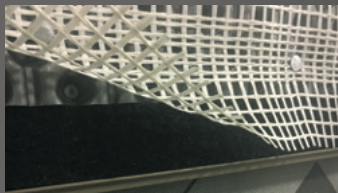
Transverse load	Exceeds code-prescribed wire lath system requirements	ICC-ES AC 11 System Combination
Attachment	≥ 48 lbs	ICC-ES AC 275 System Combination
Fastener Attachment	≥ 85 lbs	ICC-ES AC 275 System Combination
Embedment	≥ 0.12"	ICC-ES AC 275 System Combination
Tensile strenght (glass lath only)	Minimum 120 lbs	ICC-ES AC 275
Roll Size	Width: 1m/33.3 ft	Length: 14m/46 ft.



DELTA® Accessories for DELTA®-DRY & LATH.

Dörken makes your life easier – systematically.

You are sure to appreciate these handy DELTA® Accessories:



DELTA®-BUG SCREEN

Resists insects while allowing full drainage and ventilation.

DELTA®



DELTA® is a registered trademark of Ewald Dörken AG, Herdecke, Germany.

01/29/24 v3



Dörken Systems Inc.
4655 Delta Way
Beamsville,
ON L3J 0T6, Canada
Tel.: +1 (905) 563 3255
Fax: +1 (905) 563 5582
info@dorken.com
www.dorken.com

A DÖRKENGROUP company

■ The information printed in this brochure reflects product information and specifications at the date of printing. The manufacturer reserves the right to make changes when necessary.

All rights reserved.

DELTA®-branded quality products manufactured by Dörken.

■ Visit us on:

